

PASS INFORMATION

Mount Rainier National Park

- An America the Beautiful, other federal passes or day pass is required. Available for purchase at the Carbon River Ranger Station.
- Check critical alerts online before visiting: www.nps.gov/mora
- This entrance does **not** require a timed-entry permit.
- Pets are not allowed on trails.

US Forest Service Land

- A National Forest Recreation Day Pass (available for purchase at the Burnett Store), an America the Beautiful Pass or a Northwest Forest Pass is required.
- Check the rules of use for Evans Creek and Clearwater Wilderness before recreating.

KNOW BEFORE YOU GO



Paid entrance passes required on all federal lands: MRNP & USFS



NO cell phone service



Some areas require the use of rough, unpaved roads



Parking is limited in the high season



No access to Paradise or Sunrise entrances



Plan ahead, check local weather reports



No gas past Burnett - Chevron: 14204 WA-165 Buckley, WA



Local business hours vary



Restroom facilities are limited, public restroom is available in Wilkeson

Exploring the Carbon Glacier Corridor

From the Historic Town of Wilkeson to the Carbon River entrance of Mount Rainier National Park, experience the region that is treasured for its historic, cultural, and natural significance.

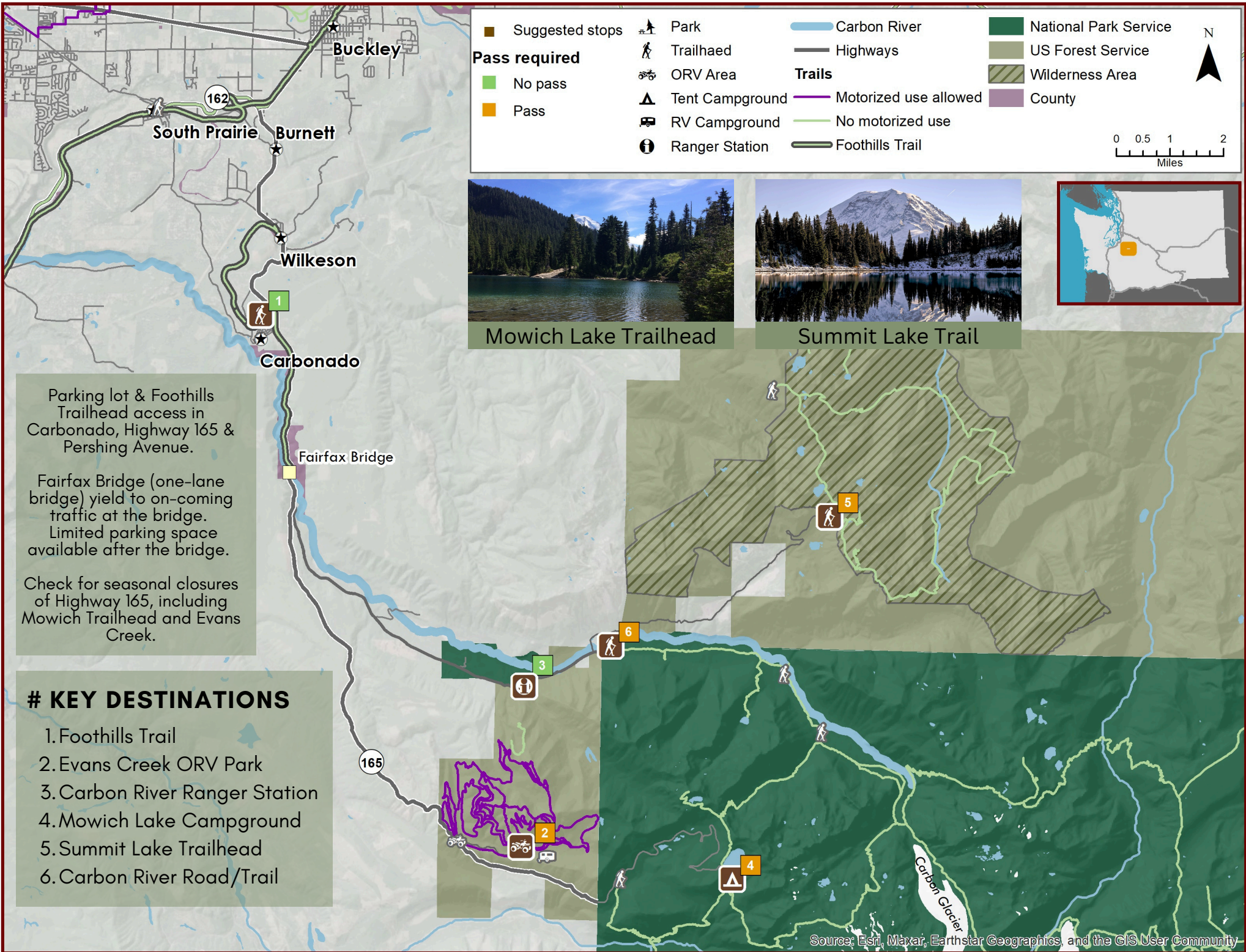
Scan me



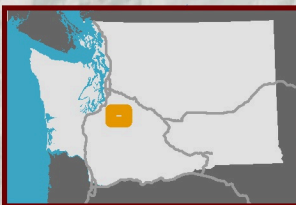
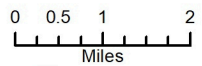
Please Respect & Enjoy



Tolmie Peak Lookout (Trailhead at Mowich)



Suggested stops	Park	Carbon River	National Park Service
Pass required	Trailhead	Highways	US Forest Service
No pass	ORV Area	Trails	Wilderness Area
Pass	Tent Campground	Motorized use allowed	County
	RV Campground	No motorized use	
	Ranger Station	Foothills Trail	



Mowich Lake Trailhead



Summit Lake Trail

Parking lot & Foothills Trailhead access in Carbonado, Highway 165 & Pershing Avenue.

Fairfax Bridge (one-lane bridge) yield to on-coming traffic at the bridge. Limited parking space available after the bridge.

Check for seasonal closures of Highway 165, including Mowich Trailhead and Evans Creek.

- # KEY DESTINATIONS**
1. Foothills Trail
 2. Evans Creek ORV Park
 3. Carbon River Ranger Station
 4. Mowich Lake Campground
 5. Summit Lake Trailhead
 6. Carbon River Road/Trail

Source: Esri, Maxar, Earthstar Geographics, and the GIS User Community